

RESMED

Swift™ FX for Her

NASAL PILLOWS SYSTEM

User Guide

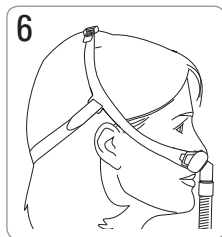
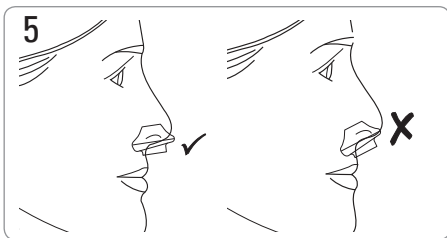
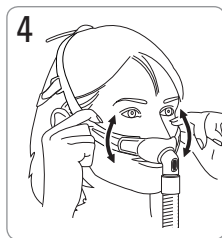
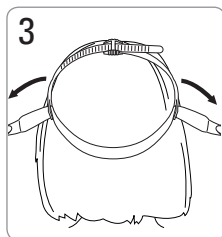
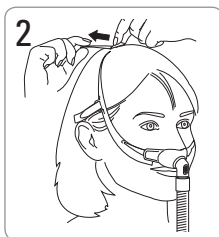
English



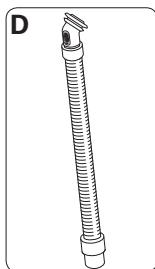
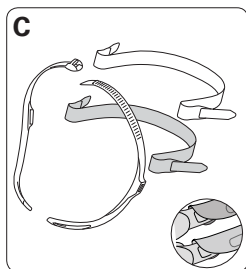
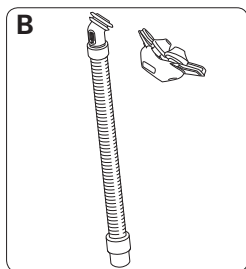
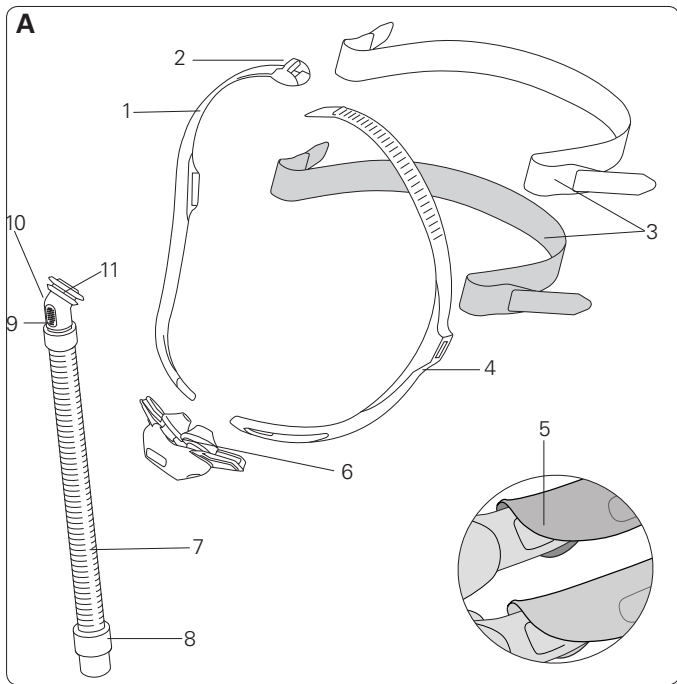
RESMED

Swift™ FX for Her

Fitting / Anlegen / Mise en place / Applicazione / Opzetten



Swift FX for Her



Mask components / Maskenkomponenten / Composants du masque / Componenti della maschera / Maskeronderdelen

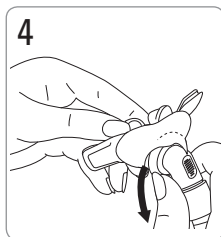
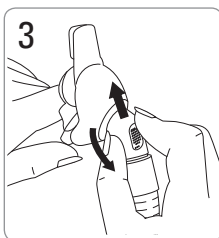
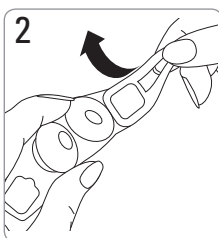
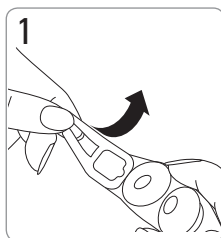
Item / Artikel / Article / Articolo / Artikel	Description / Beschreibung / Description / Descrizione / Beschrijving	Part number / Artikelnummer / Code produit / Numero parte / Onderdeel-nummer
1	Headgear right / Kopfband rechts / Partie droite du harnais / Parte destra copricapo / Rechterkant hoofdband	—
2	Top buckle / Oberer Clip / Boucle supérieure / Fibbia superiore / Bovenste hoofdbandgesp	—
3	Back strap (1 x P) Hinteres Band (1 x P) Sangle arrière (1 x P) (Cinghia posteriore (1 x P) Achterste band (1 x P)	—
4	Headgear left / Kopfband links / Partie gauche du harnais / Parte sinistra copricapo / Linkerkant hoofdband	—
5	Soft wraps / Komforthüllen / Housses souples / Involucri imbottiti / Zachte beschermers	61544 (2 x P)
6	Pillows / Nasenpolster / Coussins / Cuscinetti / Kussentjes	61520 (XS) 61521 (S) 61522 (M)
7	Short tube / Verbindungsschlauch / Tuyau court / Tubo corto / Korte slang	—
8	Swivel / Drehadapter / Pièce pivotante / Giunto rotante / Draaibare kop	—
9	Vent / Luftauslassöffnung / Orifice de ventilation / Foro per l'esalazione / Ventilatieopening	—
10	Elbow / Kniestück / Coude / Gomito / Bocht	—

Item / Artikel / Article / Articolo / Artikel	Description / Beschreibung / Description / Descrizione / Beschrijving	Part number / Artikelnummer / Code produit / Numero parte / Onderdeel-nummer
11	Swivel ring / Drehadapterring / Anneau pivotant / Anello rotante / Ring draaibare kop	—
A	Complete system / Komplettes System / Masque complet / Maschera con tutti i componenti / Volledige systeem	61545
B	Pillows system / Nasenpolstereinsatz / Coussins / Cuscinetti nasali / Kussentjessysteem	61510 (XS) 61511 (S) 61512 (M) 61513 (L)
C	Headgear assembly / Zusammenbau des Kopfbandes / Ensemble harnais / Gruppo del copricapo / Assemblage hoofdband	61543
D	Short tube assembly / Kurzer Schlauchsatz / Ensemble tuyau court / Gruppo circuito corto / Assemblage korte slang	61528 (1) 61527 (10)
Also available / Außerdem erhältlich / Également disponible / Altri prodotti / Tevens verkrijgbaar		
	Pillows / Nasenpolster / Coussins / Cuscinetti / Kussentjes	61523 (L)

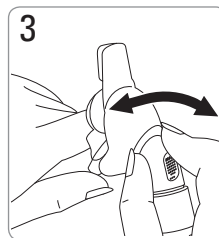
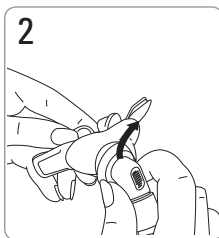
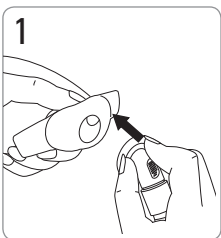
XS Extra Small / Extra Small / Très petit / Extra Small / Extra Small,
S Small / Small / Petit / Small / Small,
M Medium / Medium / Médium / Medium / Medium,
L Large / Large / Grand / Large / Large

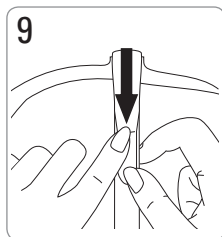
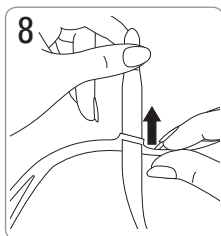
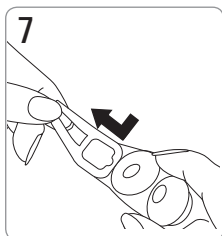
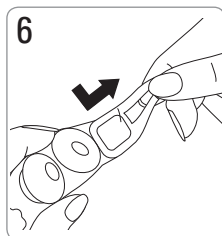
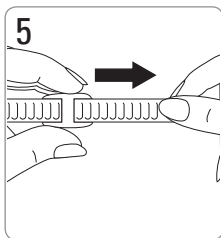
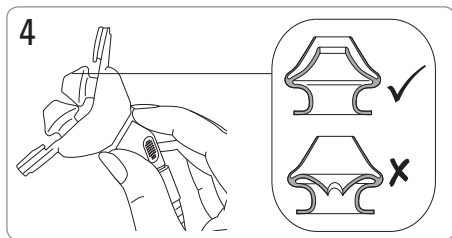
P Pink / Rosa / Roses / Rosa / Roze

**Disassembly / Auseinanderbau / Démontage /
Smontaggio / Uit elkaar halen**



**Reassembly / Zusammenbau / Remontage /
Riassemblaggio / Opnieuw in elkaar zetten**





English

Swift™ FX for Her

NASAL PILLOWS SYSTEM

Thank you for choosing the Swift FX for Her.

Intended use

The Swift FX for Her channels airflow noninvasively to a patient from a positive airway pressure (PAP) device such as a continuous positive airway pressure (CPAP) or bilevel system.

The Swift FX for Her is:

- to be used by adult patients (>30 kg) for whom positive airway pressure has been prescribed
- intended for single-patient re-use in the home environment and multipatient re-use in the hospital/institutional environment.

Using your mask

When using your mask with ResMed CPAP or bilevel devices that have mask setting options, refer to the Technical specifications section in this user guide for mask selection options.

For a full list of compatible devices for this mask, see the Mask/Device Compatibility List on www.resmed.com on the **Products** page under **Service & Support**. If you do not have internet access, please contact your ResMed representative.

Notes:

- *This mask is not compatible for use with ResMed AutoSet CS™ 2 and VPAP™ Adapt SV devices.*
- *SmartStop may not operate effectively when using this mask with some CPAP or bilevel devices that have this feature.*
- *If you experience nasal dryness or irritation, use of a humidifier is recommended.*

WARNING

- The vent holes must be kept clear.
- The mask should not be used unless the CPAP system is turned on and operating properly.
- Follow all precautions when using supplemental oxygen.
- Oxygen flow must be turned off when the CPAP or bilevel device is not operating, so that unused oxygen does not accumulate within the CPAP or bilevel device enclosure and create a risk of fire.
- At a fixed rate of supplemental oxygen flow, the inhaled oxygen concentration varies, depending on the pressure settings, patient breathing pattern, mask, point of application and leak rate.
- The technical specifications of the mask are provided for your clinician to check that they are compatible with the CPAP or bilevel device. If used outside specification or if used with incompatible devices, the seal and comfort of the mask may not be effective, optimum therapy may not be achieved, and leak, or variation in the rate of leak, may affect the CPAP or bilevel device function.
- Discontinue using this mask if you have ANY adverse reaction to the use of the mask, and consult your physician or sleep therapist.
- Using a mask may cause tooth, gum or jaw soreness or aggravate an existing dental condition. If symptoms occur, consult your physician or dentist.
- As with all masks, some rebreathing may occur at low CPAP pressures.
- Refer to your CPAP or bilevel device manual for details on settings and operational information.
- Remove all packaging before using the mask.

Cleaning your mask in the home

Your mask and headgear should only be handwashed by gently rubbing in warm (approximately 30°C) water using mild soap. All components should be rinsed well with drinking quality water and allowed to air dry out of direct sunlight.

Daily/After each use:

- To optimise the mask seal, facial oils should be removed from the cushion after use.
- Handwash the separated mask components (excluding headgear).
- If the vent requires cleaning use a soft bristle brush.

Weekly:

- Handwash the headgear. It may be washed without being disassembled.

WARNING

Do not use aromatic-based solutions or scented oils (eg, eucalyptus or essential oils), bleach, alcohol or products that smell strongly (eg, citrus) to clean any of the mask components. Residual vapours from these solutions can be inhaled if not rinsed thoroughly. They may also damage the mask, causing cracks.

CAUTION

- If any visible deterioration of a system component is apparent (cracking, crazing, tears or cushion damage), the component should be discarded and replaced.
- Avoid connecting flexible PVC products (eg, PVC tubing) directly to any part of the mask. Flexible PVC contains elements that can be detrimental to the materials of the mask, and may cause the components to crack or break.

Reprocessing the mask between patients

This mask should be reprocessed when used between patients. Cleaning, disinfection and sterilization instructions are available from the ResMed website, www.resmed.com/masks/sterilization. If you do not have internet access, please contact your ResMed representative.

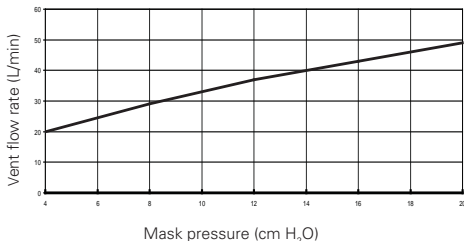
Troubleshooting

Problem / possible cause	Solution
Pillows won't seal properly, are uncomfortable or cause red marks	
Pillows may have been fitted incorrectly, adjusted incorrectly or the headgear is too tight.	Check that the ResMed logo on top of the pillows is facing outwards. Carefully follow the fitting instructions. Readjust the headgear to ensure it is not over tightened.
Inner wall position of one or both pillows is incorrect.	Squeeze pillow sides to release inner wall. The correct position is shown in the reassembly instructions.
Pillows are the wrong size.	Talk to your clinician.
Pillows may be dirty.	Clean pillows according to the instructions.
Mask is too noisy	
System is assembled incorrectly.	Disassemble the mask, then reassemble according to the instructions.
System is leaking air.	Refit or reposition you mask. Adjust your headgear. Check your mask is assembled correctly.
Vent is blocked or partially blocked.	If the vent requires cleaning, use a soft bristle brush.

Technical specifications

Pressure-flow curve

The mask contains passive venting to protect against rebreathing. As a result of manufacturing variations, the vent flow rate may vary.



Pressure (cm H ₂ O)	Flow (L/min)
4	20
8	29
12	37
16	43
20	49

Dead space information

Physical dead space is the empty volume of the mask to the end of the swivel. Using the large cushions it is 106 mL.

Therapy pressure

4 to 20 cm H₂O

Resistance

Drop in pressure measured (nominal)
at 50 L/min: 0.4 cm H₂O
at 100 L/min: 1.4 cm H₂O

Sound

DECLARED DUAL NUMBERED NOISE EMISSION VALUES IN ACCORDANCE WITH ISO 4871
The A-weighted sound power level of the mask is 25 dBA, with uncertainty 3 dBA.
The A-weighted sound pressure level of the mask at a distance of 1m is 17 dBA, with uncertainty 3 dBA.

Environmental conditions

Operating temperature: +5°C to +40°C
Operating humidity: 15% to 95% relative humidity non-condensing
Storage and transport temperature: -20°C to +60°C
Storage and transport humidity: up to 95% relative humidity non-condensing

Gross dimensions

Large: 415 mm (H) x 94 mm (W) x 45mm (D)
Mask fully assembled with short tube assembly – no headgear

Mask setting options

For S9: Select 'Pillows'
For other devices: Select 'SWIFT' (if available), otherwise select 'MIRAGE' as the mask option.

Notes:

- The mask system does not contain latex, PVC or DEHP materials.
- The manufacturer reserves the right to change these specifications without notice.













Storage

Ensure that the mask is thoroughly clean and dry before storing it for any length of time. Store the mask in a dry place out of direct sunlight.

Disposal

This mask does not contain any hazardous substances and may be disposed of with your normal household refuse.

Symbols

 Caution, consult accompanying documents;  Lot number;  Part number;  European Authorised Representative;  Temperature limitation;  Humidity limitation;  Does not contain latex;  Manufacturer;  Indicates a Warning or Caution and alerts you to a possible injury or explains special measures for the safe and effective use of the device;  Keep away from rain;  This way up;  Fragile, handle with care.

Consumer warranty

ResMed acknowledges all consumer rights granted under the EU Directive 1999/44/EG and the respective national laws within the EU for products sold within the European Union.



Manufacturer:

ResMed Ltd 1 Elizabeth Macarthur Drive Bella Vista NSW 2153 Australia

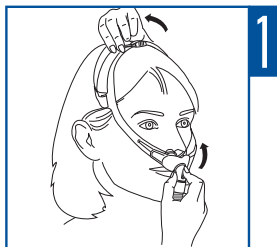
See www.resmed.com for other ResMed locations worldwide.

For patent information, see www.resmed.com/ip

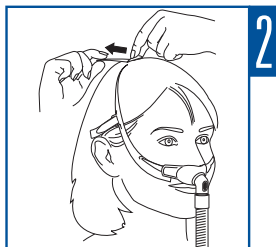
Swift is a trademark of ResMed Ltd and is registered in U.S. Patent and Trademark Office.

© 2018 ResMed Ltd.

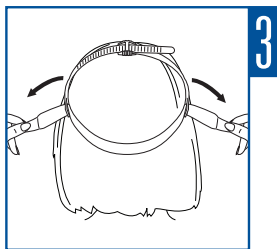




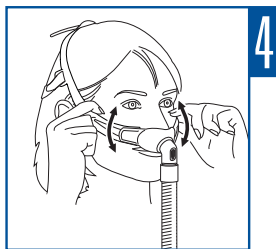
1



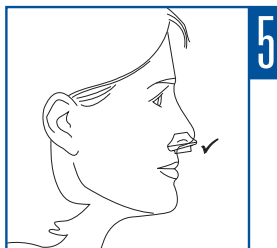
2



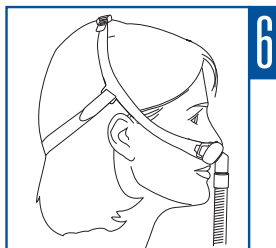
3



4



5



6

618217/2 2018-03

SWIFT FX for HER

USER

EUR1



618217