



## AirView™ Integration solutions



Get quick access to your patients' therapy data from the patient management system of your choice

AirView Integration solutions connect ResMed therapy device data to the IT Systems most used by our physician, hospital and home care provider (HCP) customers globally.

The result? Greater flexibility and improved workflows for better patient outcomes and more cost-effective healthcare.



One of the biggest challenges HCPs and hospitals face is the multitude of systems they have – and the lack of interoperability between them. This causes a variety of issues: duplication of effort, inconsistent data, and lack of resources to keep them all in sync.

ResMed designed AirView – and the AirView portfolio of Integration solutions – to address this issue head on.

## AirView: connecting care providers to therapy data

AirView is a secure, cloud-based, patient management solution that can be used along the full patient pathway, from screening and diagnosis to treatment and ongoing therapy management. It provides timely, remote access to home sleep tests as well as to sleep and respiratory care therapy and device information — just one hour after the sleep session.\*

Thanks to AirView Integration solutions, you can access patient data from AirView during treatment and therapy management phases through two options: either our standalone AirView web user interface, or through an integrated solution which you can customise to suit your needs.

“Integration has resulted in time saving and greater efficiency. Before the integration, we had to duplicate the work of discharging a patient. Now we have all the information in one program: our program. We can easily classify our patients by different alerts, and therefore, detect patients with problems”

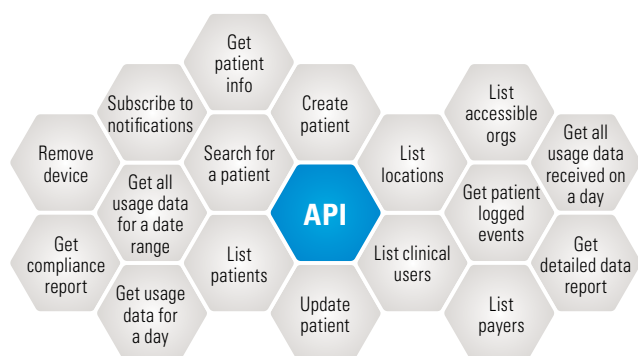
- Dr Mayoral Aguilera, Oxygen Salud, Spain -

# Bring the power of AirView and integration solutions right into your own system

## AirView™ EXCHANGE

**AirView Exchange** is a complete Application Programming Interface (API) suite contained within AirView. We engineered these APIs to enable you to create patient profiles and receive therapy usage data – without leaving your preferred system.

The integration in AirView Exchange works both ways. It allows you to create patient profiles in your system, and automatically sync this data in AirView. In parallel, you can easily share patient therapy data from AirView to your own systems.



## AirView™ EXTRACT \*\*

AirView Integration solutions also include a lighter integration option called **AirView Extract**, which provides a one-way XML file download from AirView that you can integrate into your system.

Our integration service teams will work with you to determine which is the most optimal solution for you. You can always start with AirView Extract and migrate to AirView Exchange when you're ready.

### What is an API?

An API is a set of routine definitions, protocols, and tools for building software and applications. Our APIs support the ability to generate a variety of reports, board patients into the ResMed application ecosystem, receive patient compliance notifications, exchange patient notes and more – all within your system.

## Reap the benefits of integrating AirView with your patient data management system

### Speed up access to patient data

- Get fast, secure access to patient therapy data right when you need it.
- Gain access to data from multiple usage sessions in a single day.

### Streamline workflows

- Centralise data from separate entities into one consolidated patient management system.
- Reduce your manual workload and maximise the benefits of your own software.

### Increase functionality

- Run your own algorithms to make more informed decisions on patient care.
- Develop customised applications and services for your patients.

### Save time and improve patient care

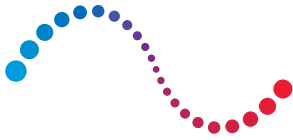
- Avoid repeatedly logging into multiple systems.
- Automatically receive an extract of patient usage and therapy data without launching AirView.
- Automate otherwise manual processes.

### Minimise data errors

- Avoid duplicate data entries and increase the level of data integrity.

### Enhance reporting

- Enhance analytical insight with data and reports in your preferred system.



**ResMed**

# AirView™ Integration solutions

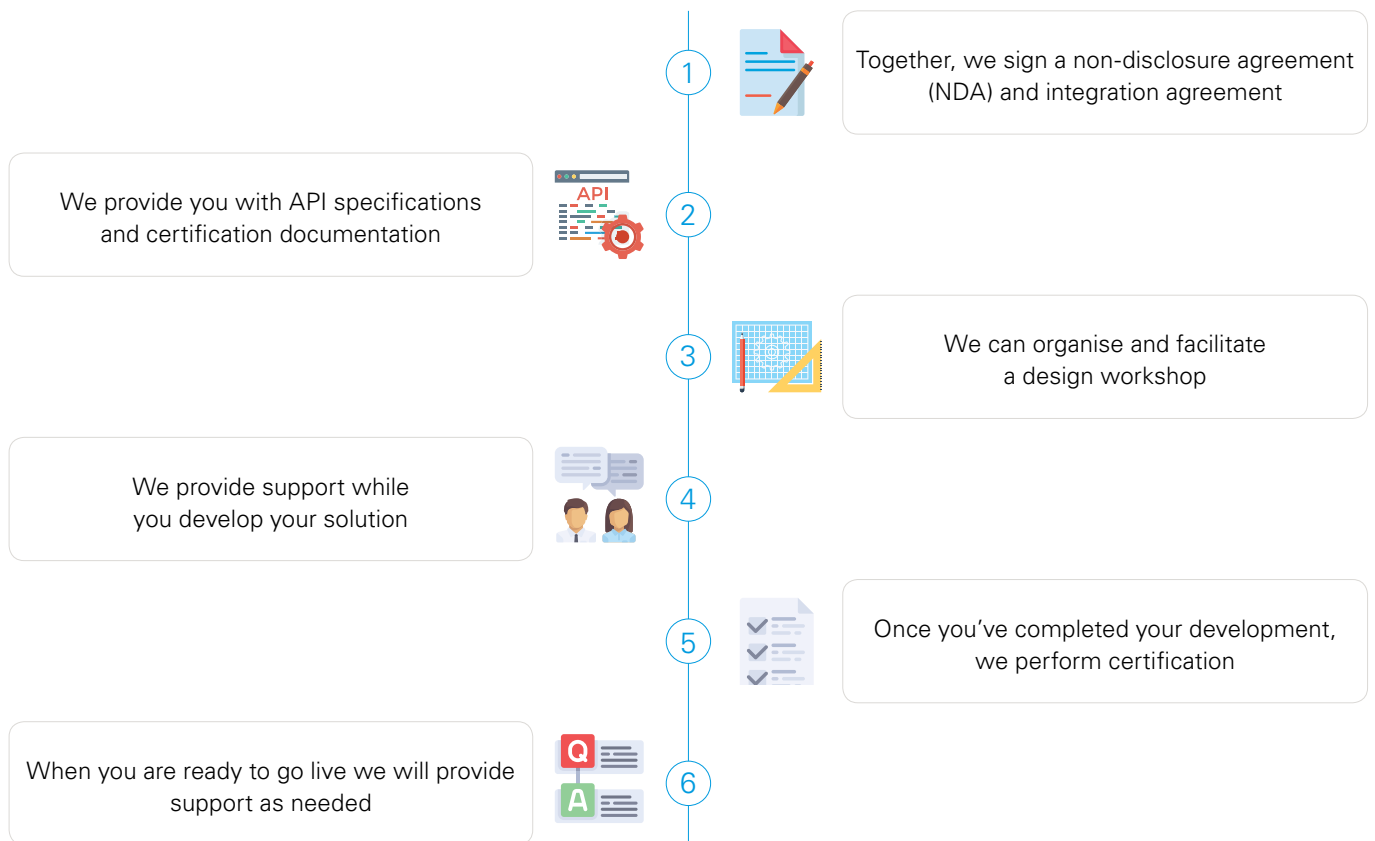
## Collaborative process

Every hospital and home care provider is different: your system may be homegrown, or a collection of 3<sup>rd</sup> party applications. Globally, we have partnerships with a number of 3<sup>rd</sup> party billing systems, business management systems as well as practice software — testifying to AirView Exchange’s ease of integration.

In addition, our AirView Integration solutions include not just AirView Exchange and AirView Extract, we also provide consulting services to help ensure you get the most out of your integration.

## How it works

Most integration projects involve the following steps:



Ready to work smarter?  
Contact us today to see how you can leverage the power  
of integration to improve workflow efficiencies  
and patient outcomes.