

## Mirage Swift™ II

NASAL PILLOWS SYSTEM

### Quick Fitting Guide

English • Deutsch • Français • Italiano • Español • Português • Svenska

**Important: Ensure ResMed logo faces outward** / Wichtig: Stellen Sie sicher, dass das ResMed-Logo nach außen zeigt / Important : veillez à ce que le logo ResMed soit tourné vers l'extérieur / Importante: Assicursi che il logo ResMed sia rivolto verso l'esterno / Importante: Asegúrese de que el logotipo de ResMed esté situado hacia fuera / Importante: Certifique-se de que o logótipo da ResMed está virado para fora / Viktigt! Se till att ResMeds logo är vänt utåt



**ResMed logo** / ResMed-Logo /  
Logo ResMed / Logo ResMed /  
Logotipo de ResMed /  
Logótipo da ResMed / ResMed  
logo



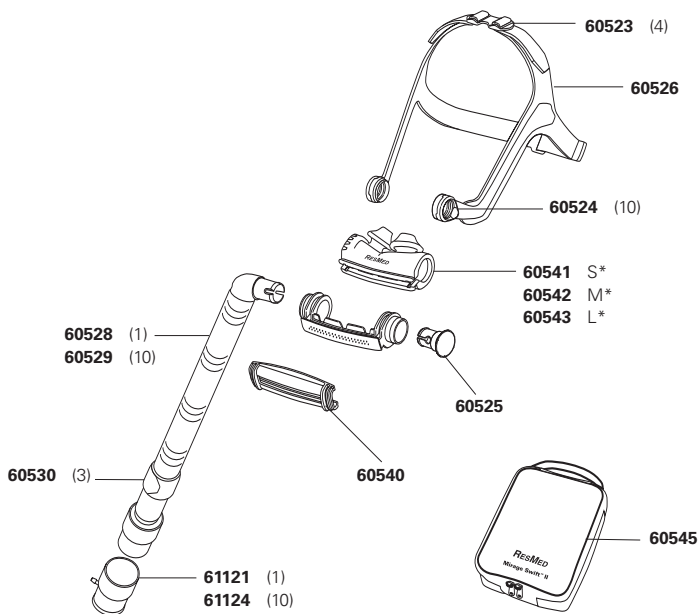
# Components Card

## Mirage Swift II Nasal Pillows System

Europe	<b>60513</b>	France	<b>60518</b>	Asia-Pacific	<b>60515</b>
ANZ	<b>60514</b>	UK	<b>60516</b>		

Frame System (no headgear) / Maskenhaltersystem (kein Kopfband) / Support (pas de harnais) / Telaio (senza copricapo) / Sistema de armazón (sin arnés para la cabeza) / Sistema de armação (sem arnês) / Ramsystem (ingen hätta)

**60537 S\*** **60538 M\*** **60539 L\***



S\* small / small / petit / small / pequeña / pequeno / small

M\* medium / medium / médium / medium / mediana / médio / medium

L\* large / large / large / large / grande / grande / large

⚠ For details, refer to the *Mirage Swift II Nasal Pillows System User Guide*. Specifications may change without notice. Mirage and Mirage Swift are trademarks of ResMed Ltd and Mirage and Swift are registered in U.S. Patent and Trademark Office.  
© 2006 ResMed Ltd. 1011041/1 06 06